



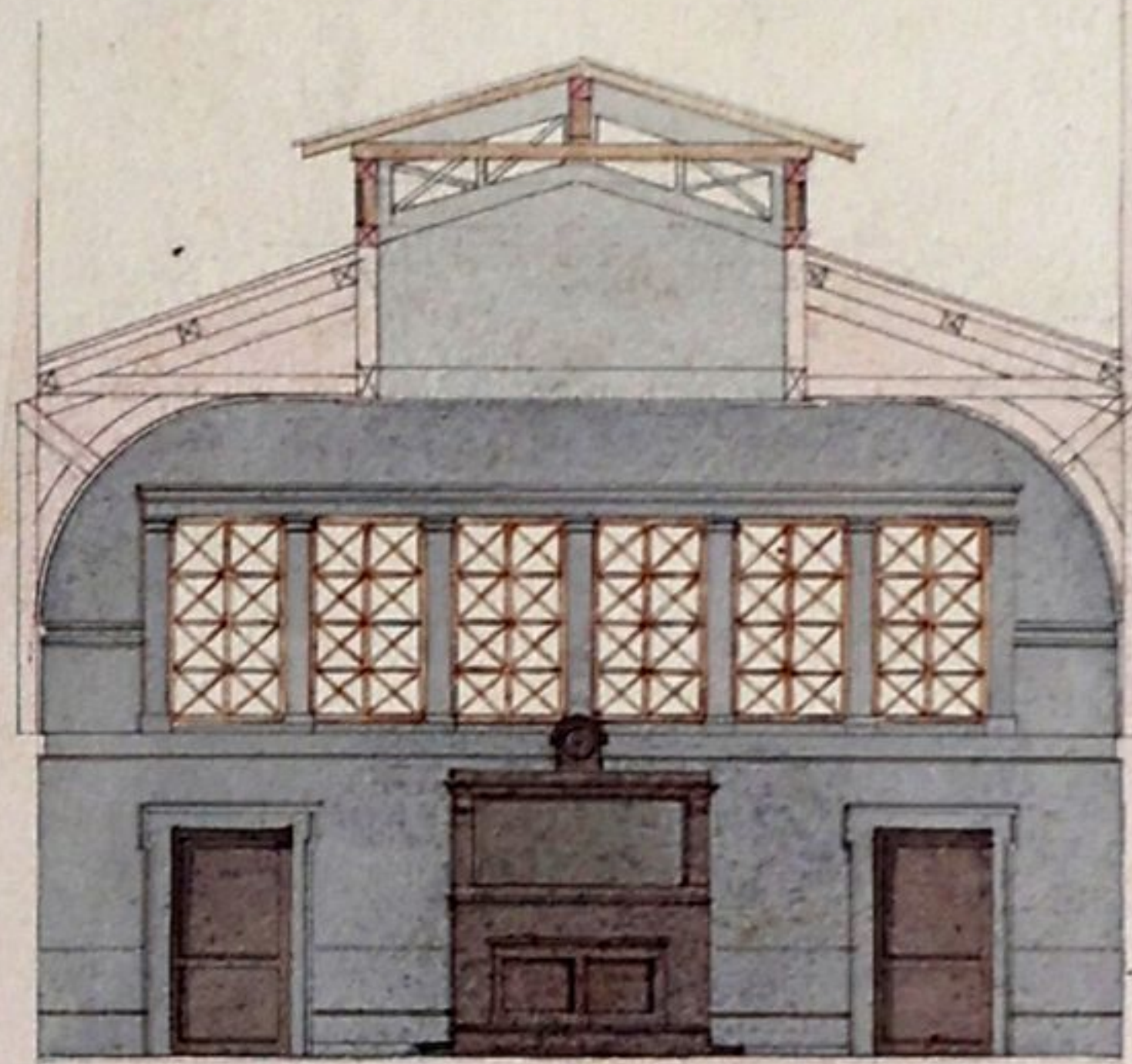
FACE SUR LA RUE.



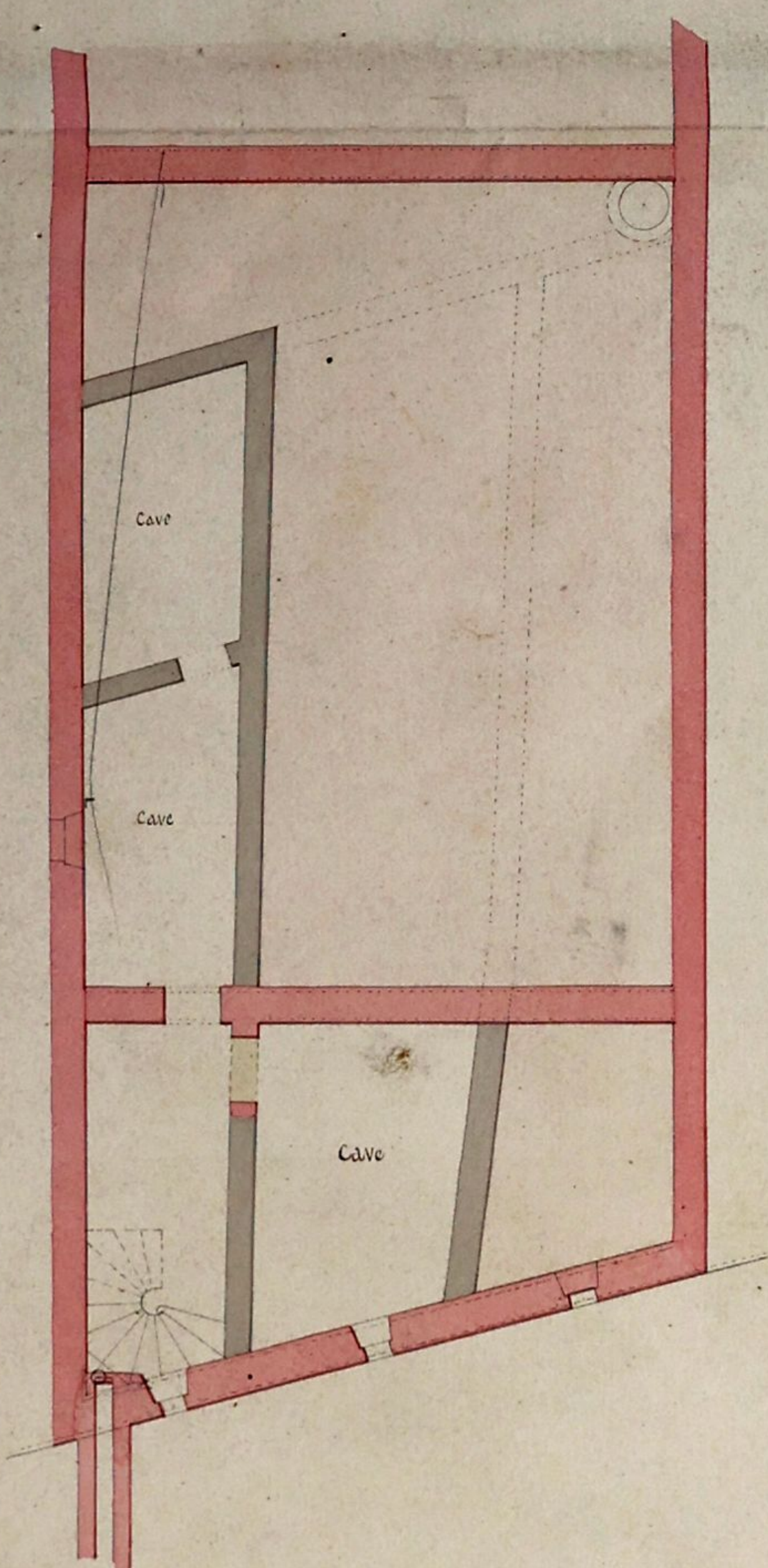
FACE SUR LA COUR.



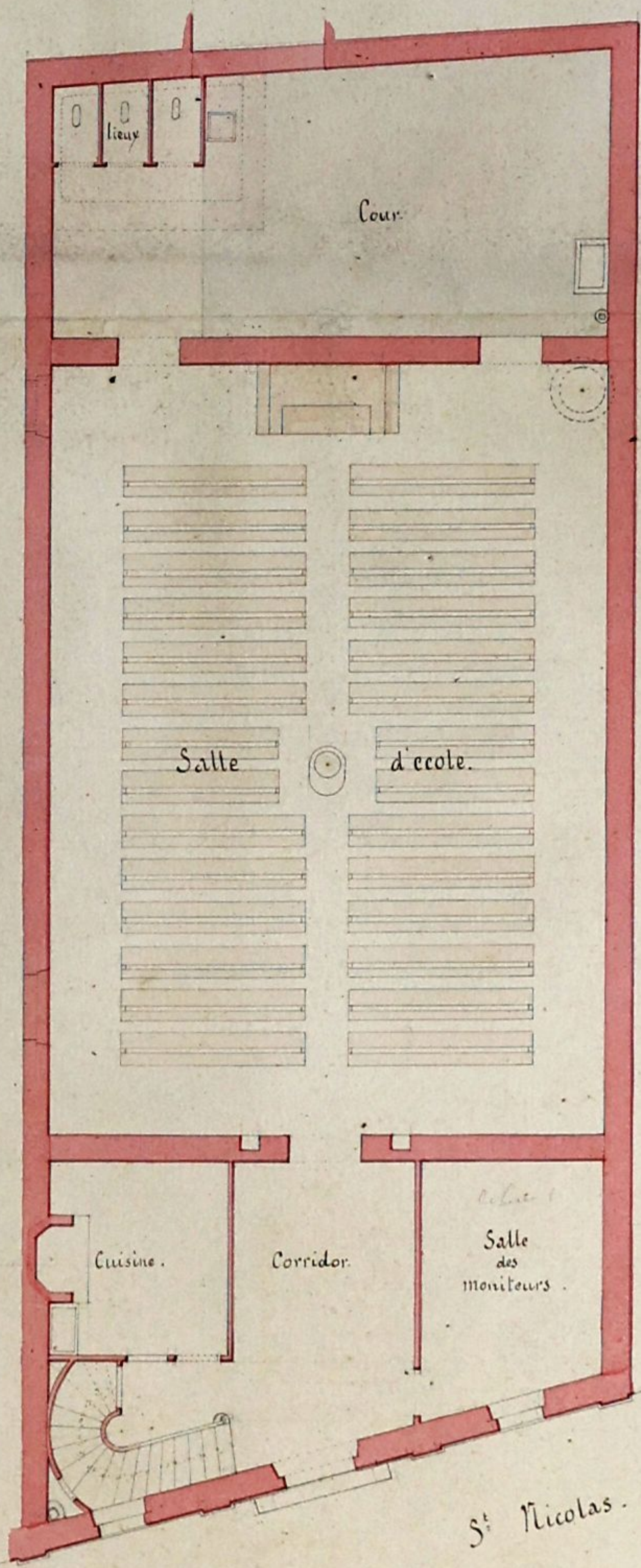
COUPE TRANSVERSALE.



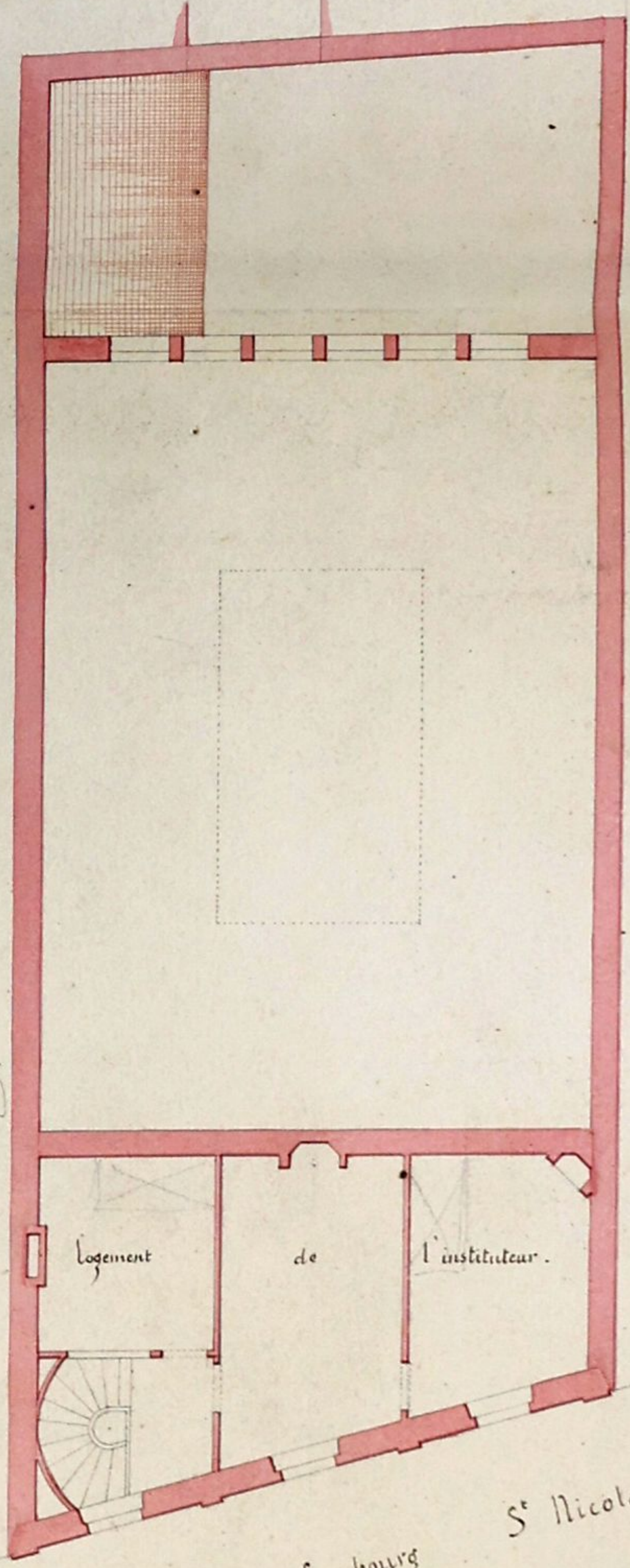
PLAN DES CAVES.



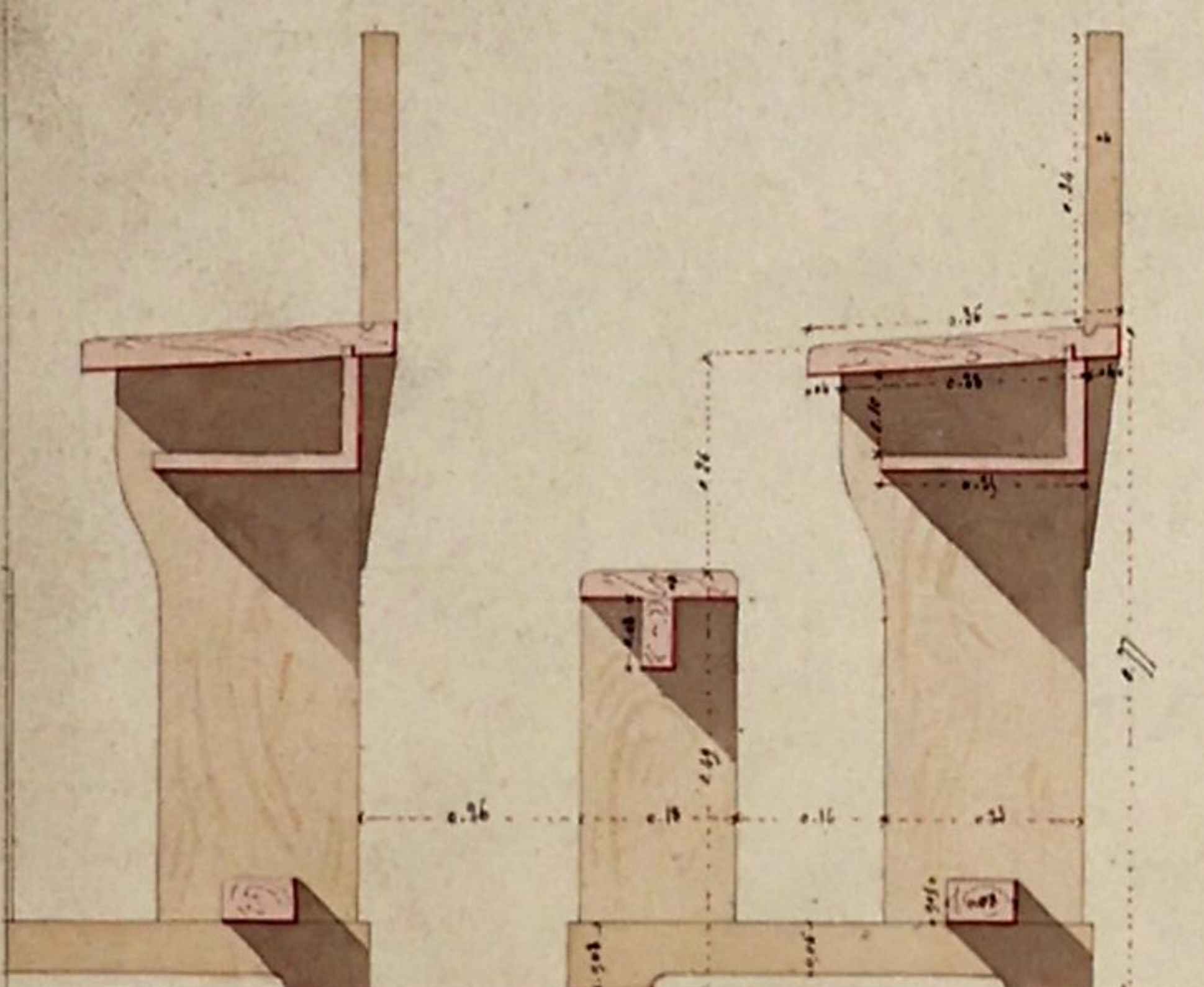
PLAN DU REZ DE CHAUSSEE.



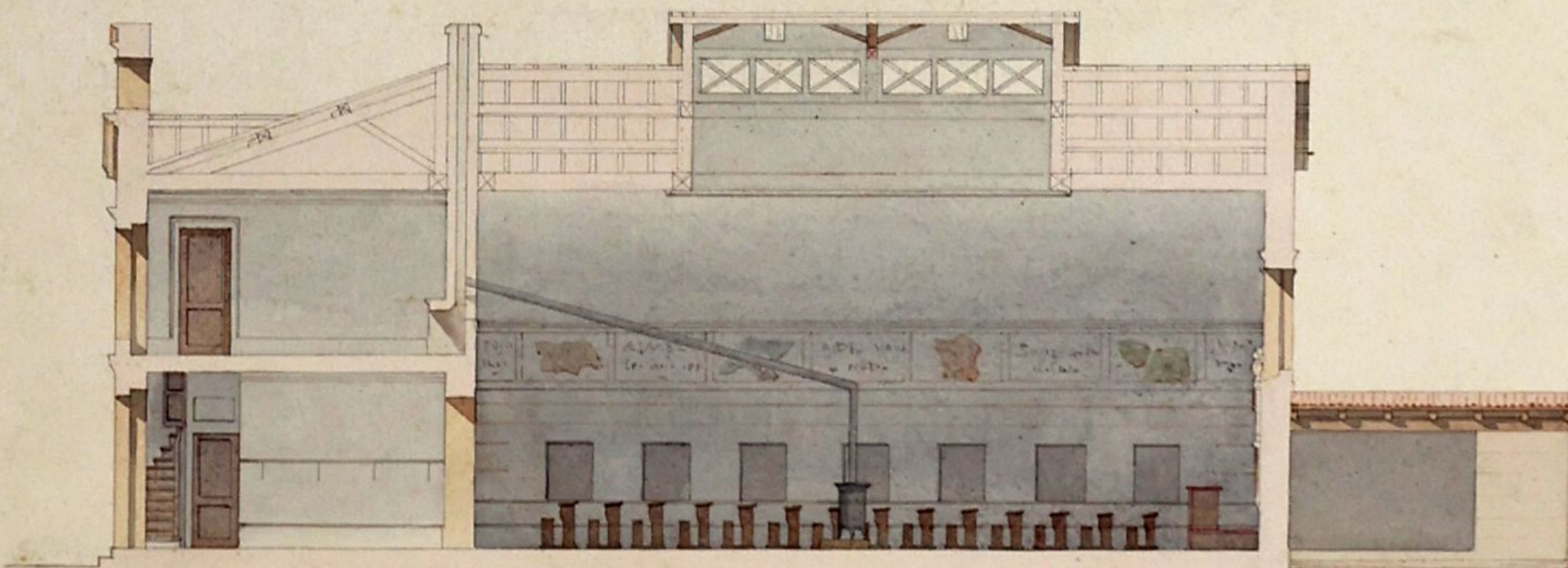
PLAN DU PREMIER.



DETAIL DES BANGS



COUPE LONGITUDINALE.



DETAIL DES LIEUX

